



Square D has been manufacturing electrical safety devices since 1902. In 1991 Square D joined with Schneider Electric. Schneider Electric was started in 1836 and has been involved in the electrical industry since the beginning. WINCO uses Square D products because they have a long history of producing highly reliable and safe electrical components.

## BDL

Amperage Range	15-125
Rating	2-3 Pole 250 VDC/600 VAC
Interrupting Rating	
208/240V	25 kA
480V	18 kA
600V	14 kA
Frequency	60 Hz
Lug Wire Size	(1) #6 - #2/0 AWG (1) #14 - #3/0 AWG
Trip Mechanism	Thermal-Magnetic
Standards	UL 489 UL 5008 per NEMA B600
Trip Indicator	Yes
Operating Temp	-13°F - 158° F

## HDL

Amperage Range	15-150
Rating	2-3 Pole 250 VDC/600 VAC
Interrupting Rating	
240V	65 kA
480V	35 kA
600V	18 kA
Frequency	60 Hz
Lug Wire Size	(1) #14 - #3/0 AWG
Trip Mechanism	Electronic, Adjustable
Standards	UL 489 NEMA AB1
Trip Indicator	Yes
Operating Temp	-13°F - 158° F

## QOU

Amperage Range	10-125
Rating	2-3 Pole 60 VDC/277 VAC
Interrupting Rating	
240V	10 kA
277V	5 kA
Frequency	60 Hz
Lug Wire Size	
60 Amp	(1) #14 - #2 AWG
80-125 Amp	(1) #12 - #2/0 AWG
Trip Mechanism	Thermal-Magnetic
Standards	UL 489 NEMA AB1
Trip Indicator	Yes
Operating Temp	14°F - 104° F

## Q4L

Amperage Range	125-400
Rating	2-3 Pole 240 VAC
Interrupting Rating	25 kA
Frequency	60 Hz
Lug Wire Size	(1) #1 AWG-600 kcmil or (2) #1 AWG-250 kcmil
Trip Mechanism	Thermal-Magnetic
Standards	UL 489 NEMA AB1
Trip Indicator	Yes
Ambient Temp Rating	-13°F - 158° F

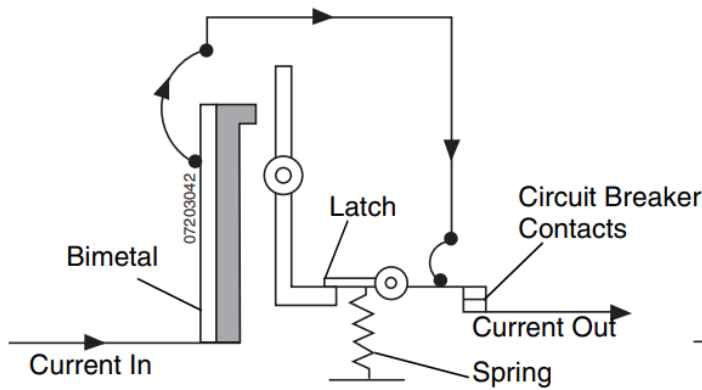
# MGL

Amperage Range	300-800
Rating	2-3 Pole 600 VAC
Interrupting Rating	
240V	65 kA
480V	35 kA
600V	18 kA
Frequency	60 Hz
Lug Wire Size	(3) #3/0 AWG-500 kcmil
Trip Mechanism	Electronic, Adjustable
Standards	UL 489 NEMA AB1
Trip Indicator	Yes
Ambient Temp Rating	-13°F - 158° F

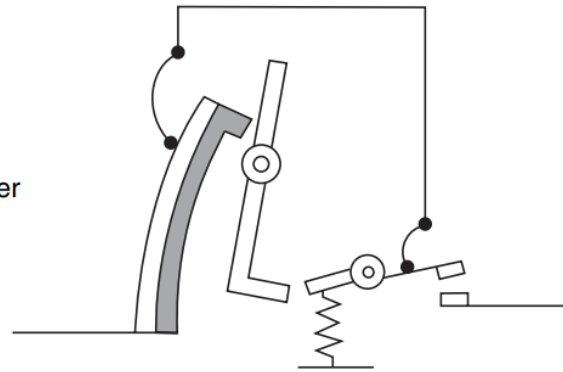
# PGL

Amperage Range	600-1200
Rating	2-3 Pole 600 VAC
Interrupting Rating	
240V	65 kA
480V	35 kA
600V	18 kA
Frequency	60 Hz
Lug Wire Size	
600-800A	(3) #3/0 AWG -500 kcmil
1000-1200A	(4) #3/0 AWG-500 kcmil
Trip Mechanism	Electronic
Standards	UL 489 NEMA AB1
Trip Indicator	Yes
Ambient Temp Rating	-13°F - 158° F

## THERMAL TRIPPING

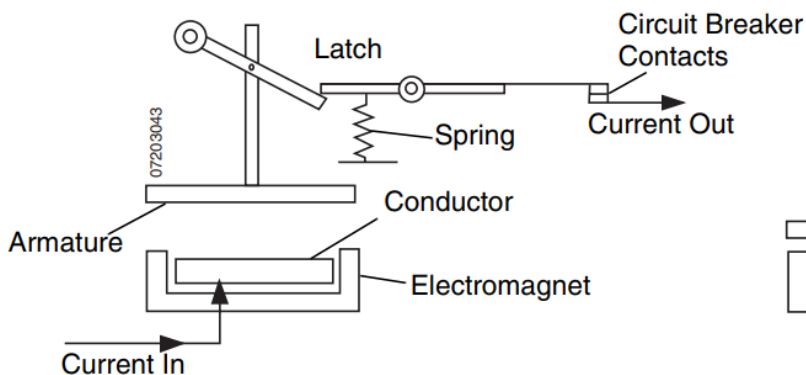


Normal Conditions

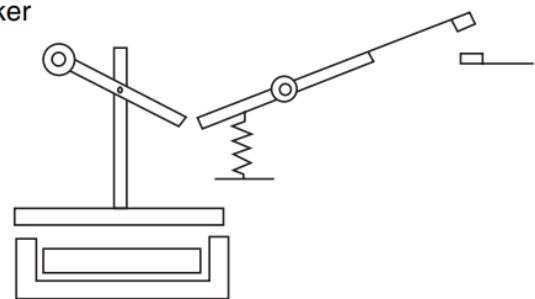


Thermal Trip

## MAGNETIC TRIPPING

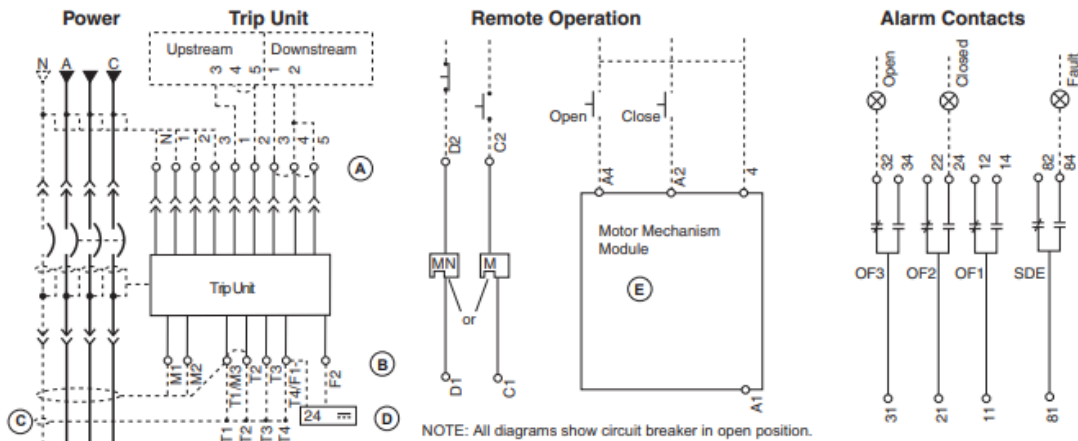


Normal Conditions



Normal Conditions

# ELECTRONIC TRIPPING



A-Do not remove factory-installed jumpers between Z3, Z4 and Z5 unless ZS1 is connected.  
 B-Do not remove factory-installed jumper between T1 and T2 unless neutral CT is connected. Do not install jumper between T3 and T4.  
 C-For proper wiring of neutral CT, refer to Instruction Bulletin 48041-082-01 shipped with it.  
 D-24 Vdc power supply for trip unit must be separate and isolated from 24 Vdc power supply for communication modules.  
 E-Motor mechanism includes opening and closing coils.

## CIRCUIT BREAKER MODEL PER GENERATOR

GENERATOR MODEL	240V 1-PH CB MODEL	208/240V 3-PH CB MODEL	480/600V 3-PH CB MODEL
PSS21	QOU	QOU	BDL
PSS30	QOU	QOU	BDL
PSS60	Q4L	QOU	HDL
PSS90	Q4L	Q4L	HDL
PSS150	MGL	MGL	MGL
DR12	QOU	QOU	BDL
DR20	QOU	QOU	BDL
DR45	Q4L	Q4L	HDL
DR65	Q4L	Q4L	HDL
DR90	Q4L	Q4L	HDL
DR100	MGL	MGL	MGL
DR130	MGL	MGL	MGL
DR175	MGL	MGL	MGL
DR250	-	PGL	PGL
DR300	-	PGL	PGL
DR350	-	PGL	PGL